

# ONE TEN

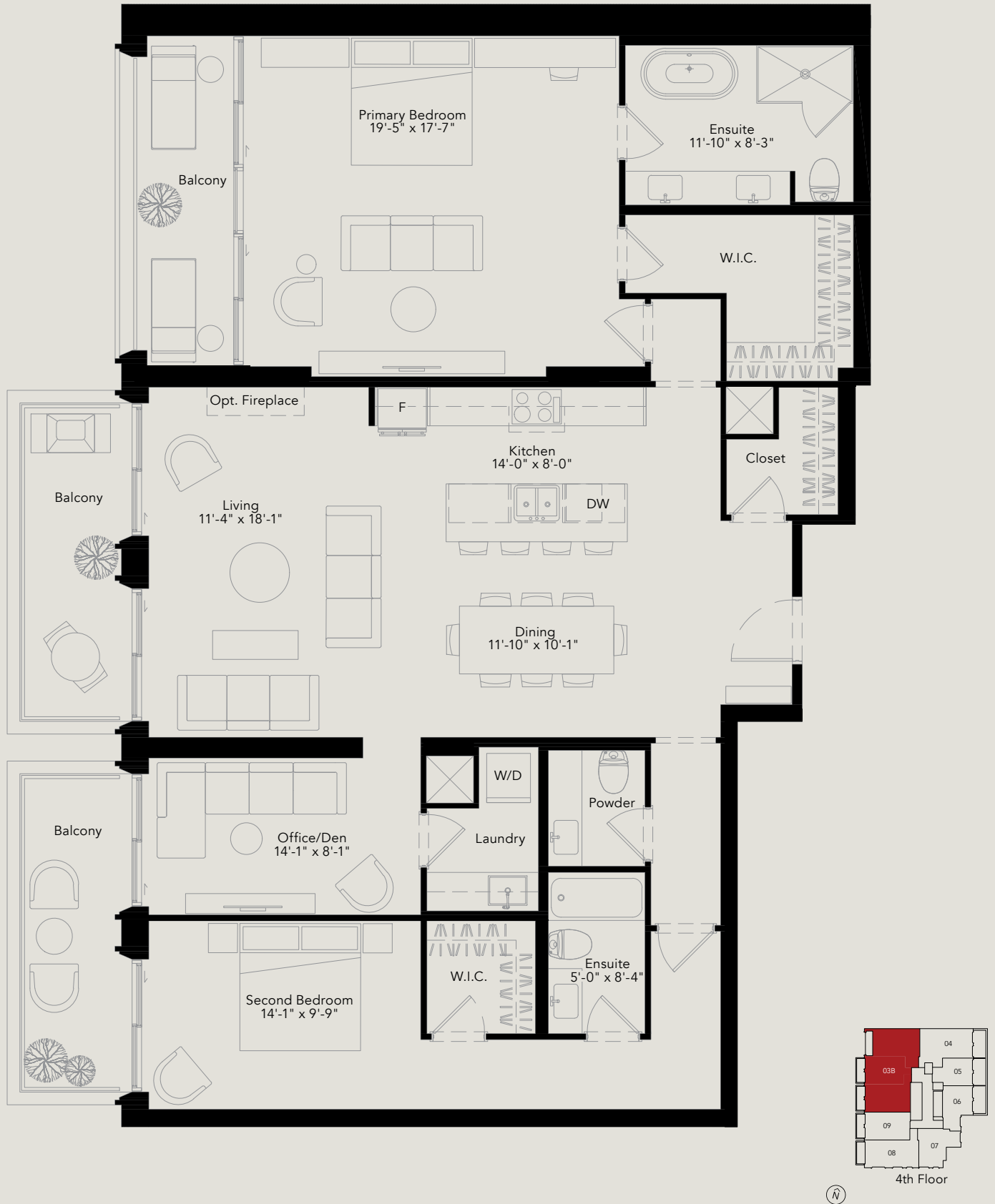
AVENUE ROAD · YORKVILLE

## 403B The Scollard Collection

2 Bedroom + Den

Total: 2,183 Sq. Ft.

Interior: 1,905 Sq. Ft.  
Exterior: 278 Sq. Ft.



Any stated areas and/or shown are approximate only and subject to normal construction variances. Actual useable floor space may vary from any stated or depicted floor area and the unit shall be measured in accordance with the provisions set out in the HCRA Directive-Floor Area Calculations. The layout of the suite may be reversed depending on the location of the unit within the project. The size and configuration of balconies and/or terraces remains subject to change and the ultimate layout, size, and configuration will be determined in the course of construction by the Vendor, in its sole and absolute discretion. The size, location and/or configuration of the windows, columns and spandrel glass shown may be changed, varied or mirrored. Ceiling heights are subject to exposed ducts, dropped ceilings, structural beams and bulkheads required for mechanical purposes such as kitchen and washroom exhausts and heating and cooling ducts have not been shown or indicated. Any and all materials, measurements, dimensions and/or specifications are subject to change without notice. Unit 401/402/403. E.&O.E. July, 2025



# ONE TEN

AVENUE ROAD · YORKVILLE

## 603B The Berryman Collection

1 Bedroom + Den

Total: 1,486 Sq. Ft.

Interior: 1,320 Sq. Ft.  
Exterior: 166 Sq. Ft.



Any stated areas and/or shown are approximate only and subject to normal construction variances. Actual useable floor space may vary from any stated or depicted floor area and the unit shall be measured in accordance with the provisions set out in the HCRA Directive-Floor Area Calculations. The layout of the suite may be reversed depending on the location of the unit within the project. The size and configuration of balconies and/or terraces remains subject to change and the ultimate layout, size, and configuration will be determined in the course of construction by the Vendor, in its sole and absolute discretion. The size, location and/or configuration of the windows, columns and spandrel glass shown may be changed, varied or mirrored. Ceiling heights are subject to exposed ducts, dropped ceilings, structural beams and bulkheads required for mechanical purposes such as kitchen and washroom exhausts and heating and cooling ducts have not been shown or indicated. Any and all materials, measurements, dimensions and/or specifications are subject to change without notice. Unit 602/603. E.&O.E. July, 2025

sierra

# ONE TEN

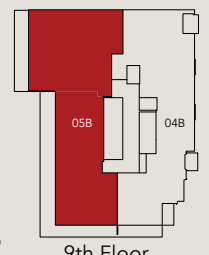
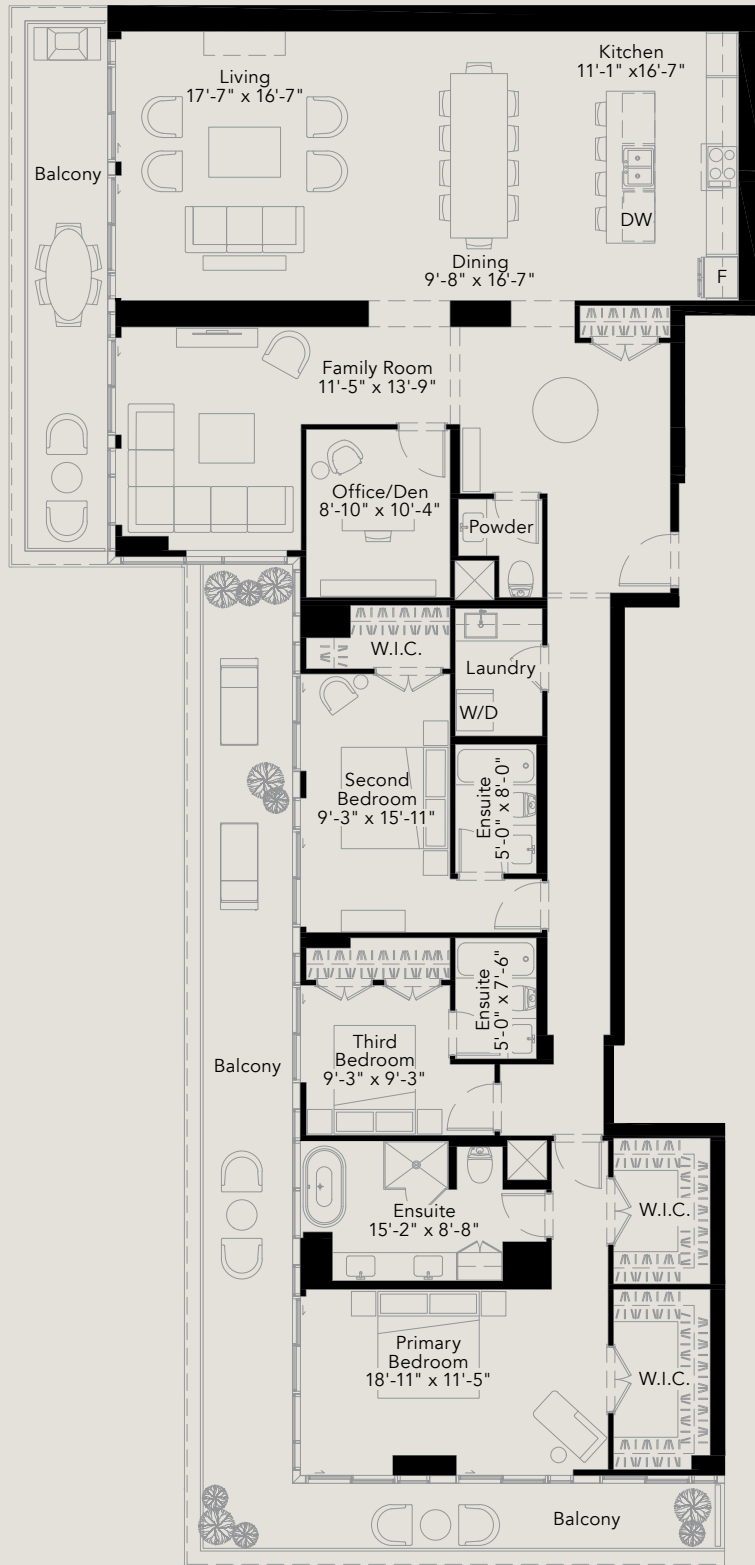
AVENUE ROAD · YORKVILLE

## 905B The Hazelton Collection

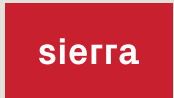
3 Bedroom + Den

Total: 3,476 Sq. Ft.

Interior: 2,585 Sq. Ft.  
Exterior: 618 Sq. Ft.



Any stated areas and/or shown are approximate only and subject to normal construction variances. Actual useable floor space may vary from any stated or depicted floor area and the unit shall be measured in accordance with the provisions set out in the HCRA Directive-Floor Area Calculations. The layout of the suite may be reversed depending on the location of the unit within the project. The size and configuration of balconies and/or terraces remains subject to change and the ultimate layout, size, and configuration will be determined in the course of construction by the Vendor, in its sole and absolute discretion. The size, location and/or configuration of the windows, columns and spandrel glass shown may be changed, varied or mirrored. Ceiling heights are subject to exposed ducts, dropped ceilings, structural beams and bulkheads required for mechanical purposes such as kitchen and washroom exhausts and heating and cooling ducts have not been shown or indicated. Any and all materials, measurements, dimensions and/or specifications are subject to change without notice. Unit 901/905. E.&O.E. July, 2025



# ONE TEN

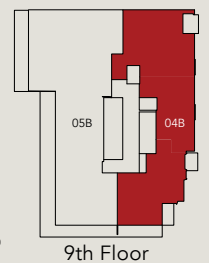
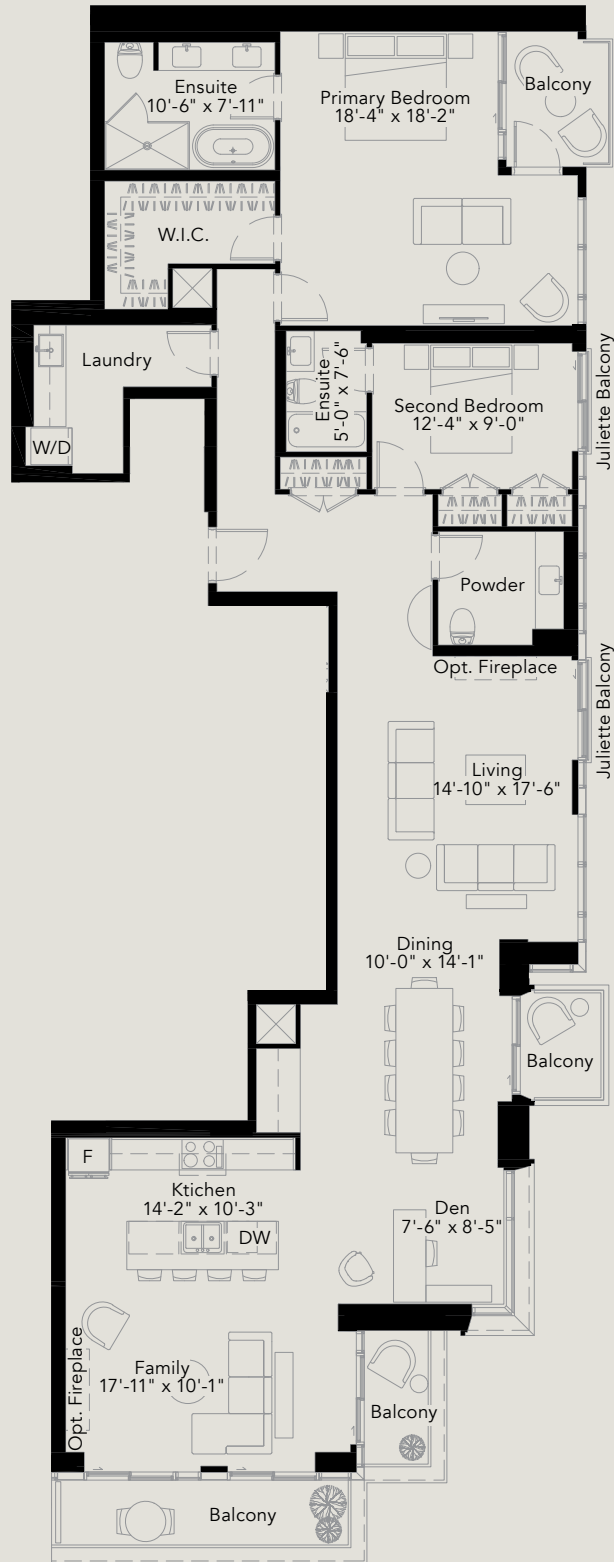
AVENUE ROAD · YORKVILLE

## 904B The Scollard Collection

2 Bedroom + Den

Total: 2,294 Sq. Ft.

Interior: 2,096 Sq. Ft.  
Exterior: 198 Sq. Ft.



Any stated areas and/or shown are approximate only and subject to normal construction variances. Actual useable floor space may vary from any stated or depicted floor area and the unit shall be measured in accordance with the provisions set out in the HCRA Directive-Floor Area Calculations. The layout of the suite may be reversed depending on the location of the unit within the project. The size and configuration of balconies and/or terraces remains subject to change and the ultimate layout, size, and configuration will be determined in the course of construction by the Vendor, in its sole and absolute discretion. The size, location and/or configuration of the windows, columns and spandrel glass shown may be changed, varied or mirrored. Ceiling heights are subject to exposed ducts, dropped ceilings, structural beams and bulkheads required for mechanical purposes such as kitchen and washroom exhausts and heating and cooling ducts have not been shown or indicated. Any and all materials, measurements, dimensions and/or specifications are subject to change without notice. Unit 902/903/904. E.&O.E. July, 2025



# ONE TEN

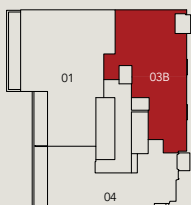
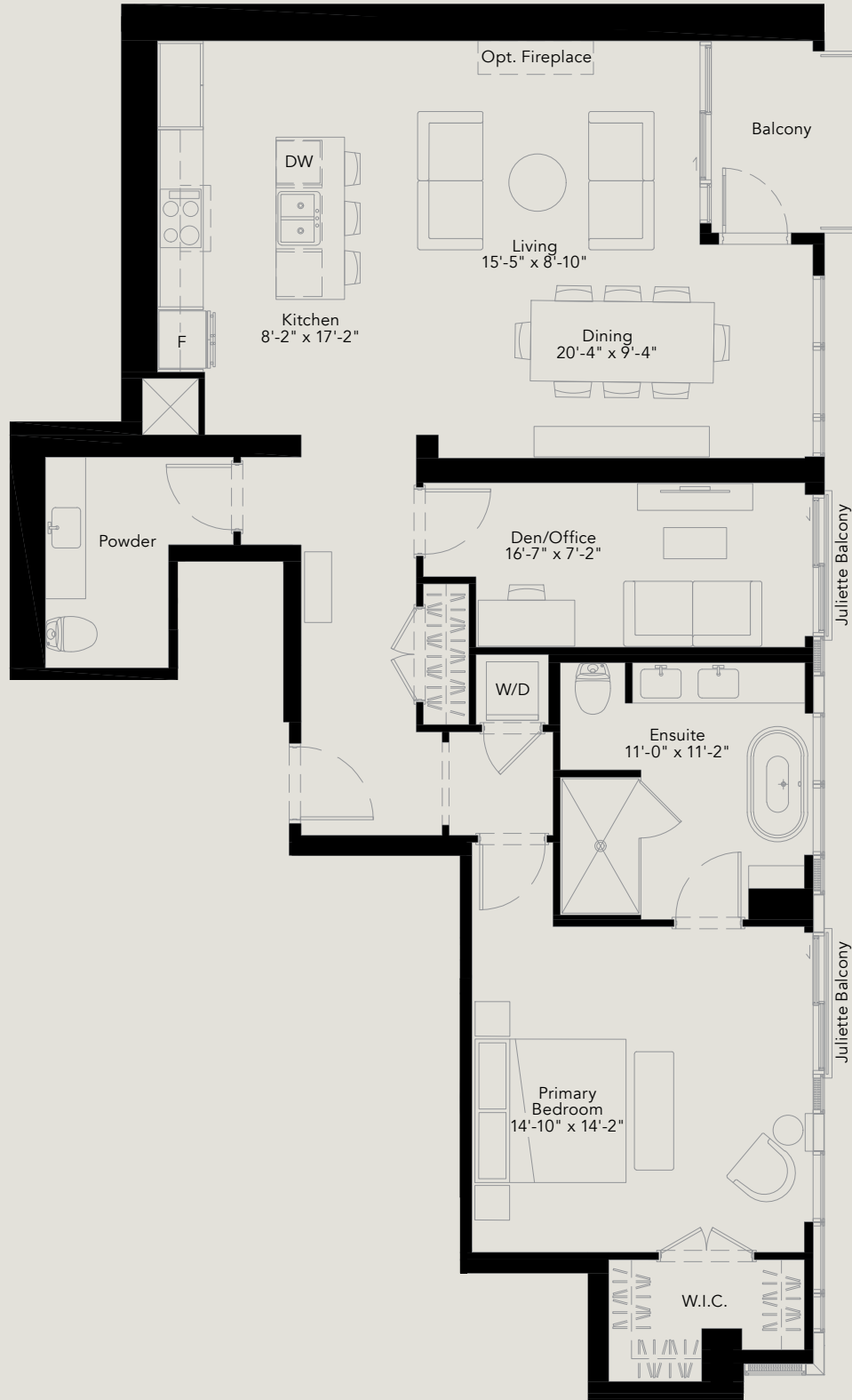
AVENUE ROAD · YORKVILLE

## 1003B The Berryman Collection

1 Bedroom + Den

Total: 1,436 Sq. Ft.

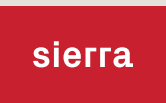
Interior: 1,382 Sq. Ft.  
Exterior: 54 Sq. Ft.



10th Floor



Any stated areas and/or shown are approximate only and subject to normal construction variances. Actual useable floor space may vary from any stated or depicted floor area and the unit shall be measured in accordance with the provisions set out in the HCRA Directive-Floor Area Calculations. The layout of the suite may be reversed depending on the location of the unit within the project. The size and configuration of balconies and/or terraces remains subject to change and the ultimate layout, size, and configuration will be determined in the course of construction by the Vendor, in its sole and absolute discretion. The size, location and/or configuration of the windows, columns and spandrel glass shown may be changed, varied or mirrored. Ceiling heights are subject to exposed ducts, dropped ceilings, structural beams and bulkheads required for mechanical purposes such as kitchen and washroom exhausts and heating and cooling ducts have not been shown or indicated. Any and all materials, measurements, dimensions and/or specifications are subject to change without notice. Unit 1003/1103. E.&O.E. July, 2025



# ONE TEN

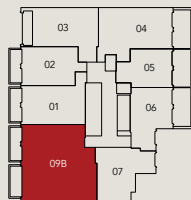
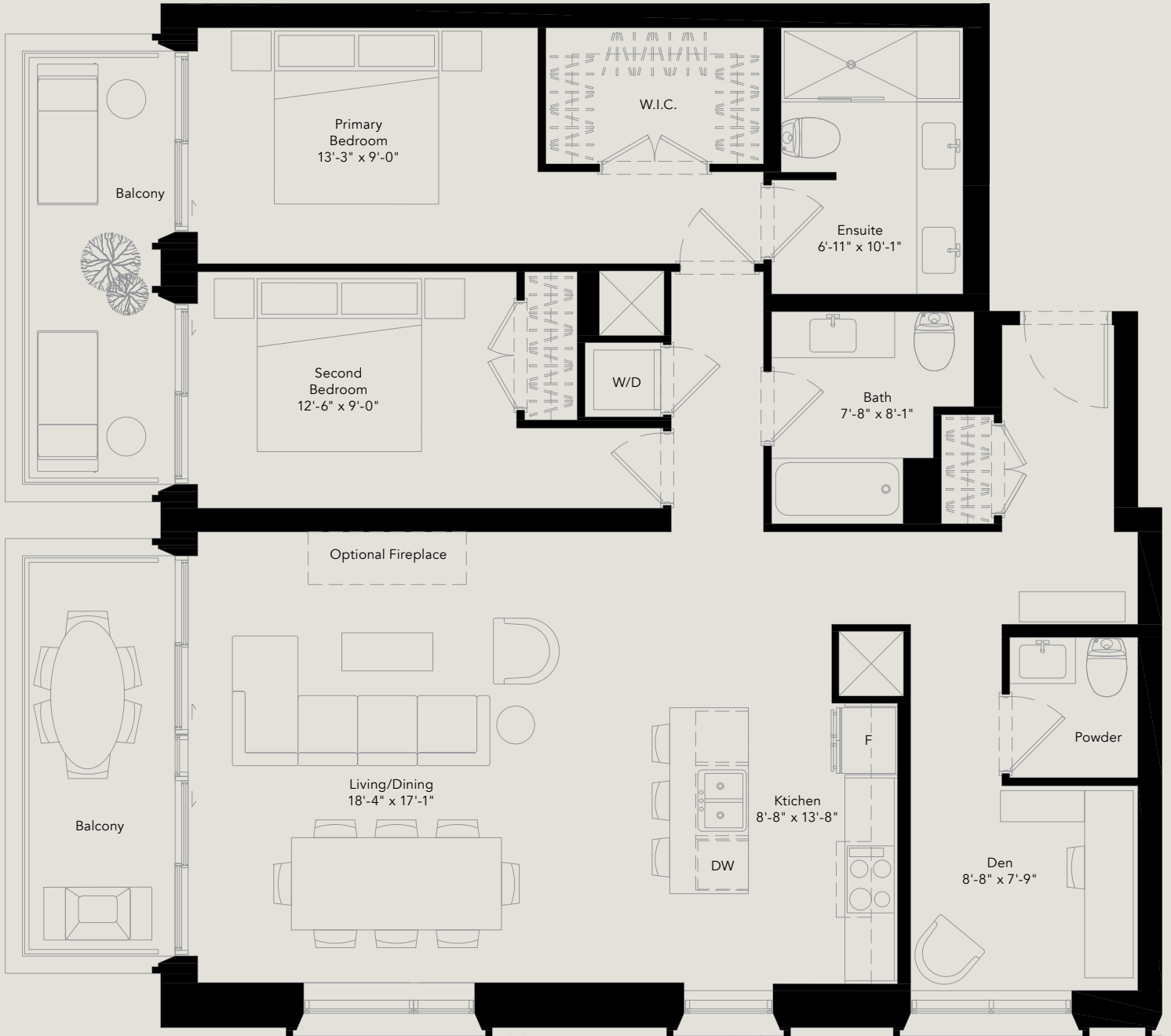
AVENUE ROAD · YORKVILLE

## 409B The Scollard Collection

2 Bedroom + Den

Total: 1,526 Sq. Ft.

Interior: 1,344 Sq. Ft.  
Exterior: 182 Sq. Ft.



4th Floor



Any stated areas and/or shown are approximate only and subject to normal construction variances. Actual useable floor space may vary from any stated or depicted floor area and the unit shall be measured in accordance with the provisions set out in the HCRA Directive-Floor Area Calculations. The layout of the suite may be reversed depending on the location of the unit within the project. The size and configuration of balconies and/or terraces remains subject to change and the ultimate layout, size, and configuration will be determined in the course of construction by the Vendor, in its sole and absolute discretion. The size, location and/or configuration of the windows, columns and spandrel glass shown may be changed, varied or mirrored. Ceiling heights are subject to exposed ducts, dropped ceilings, structural beams and bulkheads required for mechanical purposes such as kitchen and washroom exhausts and heating and cooling ducts have not been shown or indicated. Any and all materials, measurements, dimensions and/or specifications are subject to change without notice. Unit 408/409 E.&O.E. April, 2025

sierra

# ONE TEN

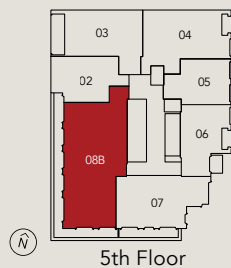
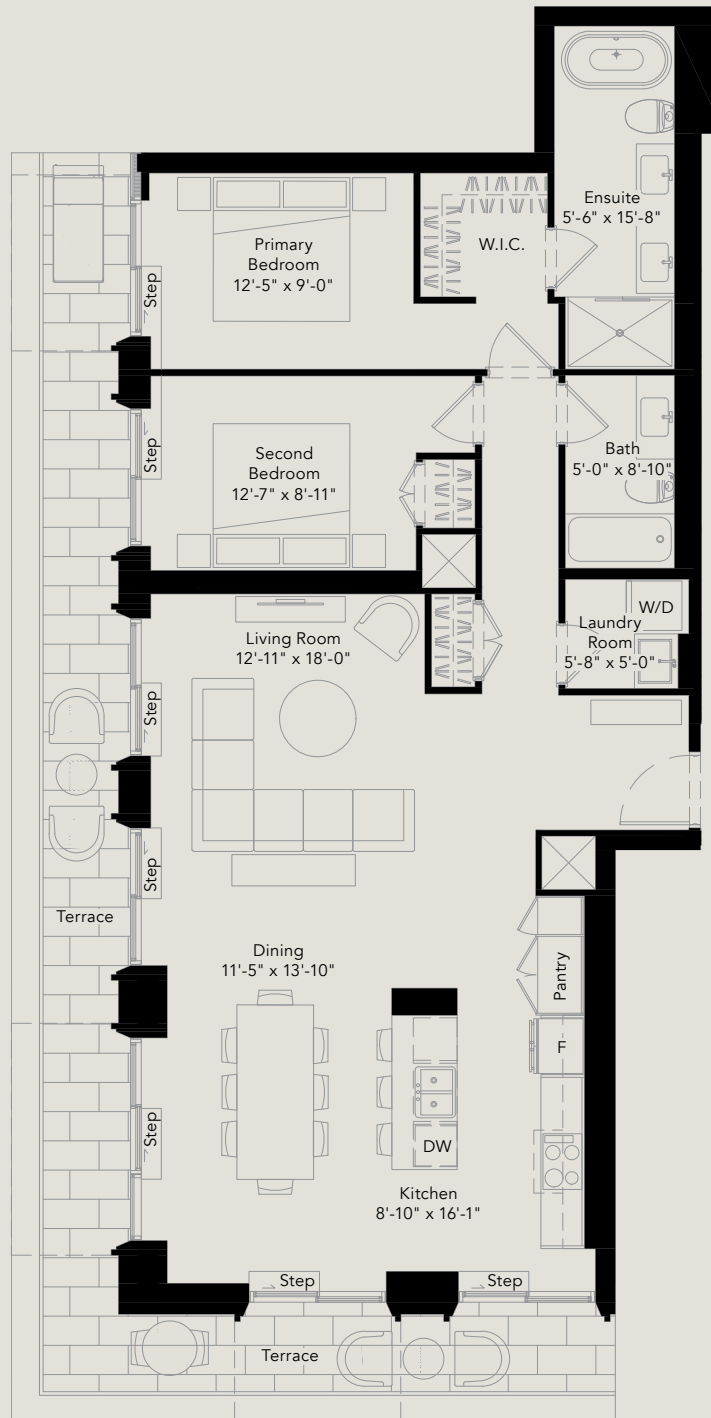
AVENUE ROAD · YORKVILLE

## 508B The Cumberland Collection

2 Bedroom

Total: 1,669 Sq. Ft.

Interior: 1,338 Sq. Ft.  
Exterior: 331 Sq. Ft.



5th Floor

Any stated areas and/or shown are approximate only and subject to normal construction variances. Actual useable floor space may vary from any stated or depicted floor area and the unit shall be measured in accordance with the provisions set out in the HCRA Directive-Floor Area Calculations. The layout of the suite may be reversed depending on the location of the unit within the project. The size and configuration of balconies and/or terraces remains subject to change and the ultimate layout, size, and configuration will be determined in the course of construction by the Vendor, in its sole and absolute discretion. The size, location and/or configuration of the windows, columns and spandrel glass shown may be changed, varied or mirrored. Ceiling heights are subject to exposed ducts, dropped ceilings, structural beams and bulkheads required for mechanical purposes such as kitchen and washroom exhausts and heating and cooling ducts have not been shown or indicated. Any and all materials, measurements, dimensions and/or specifications are subject to change without notice. Unit 501/508 E.&O.E. April, 2025

sierra

# ONE TEN

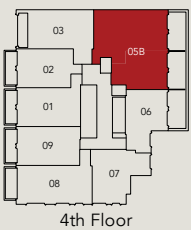
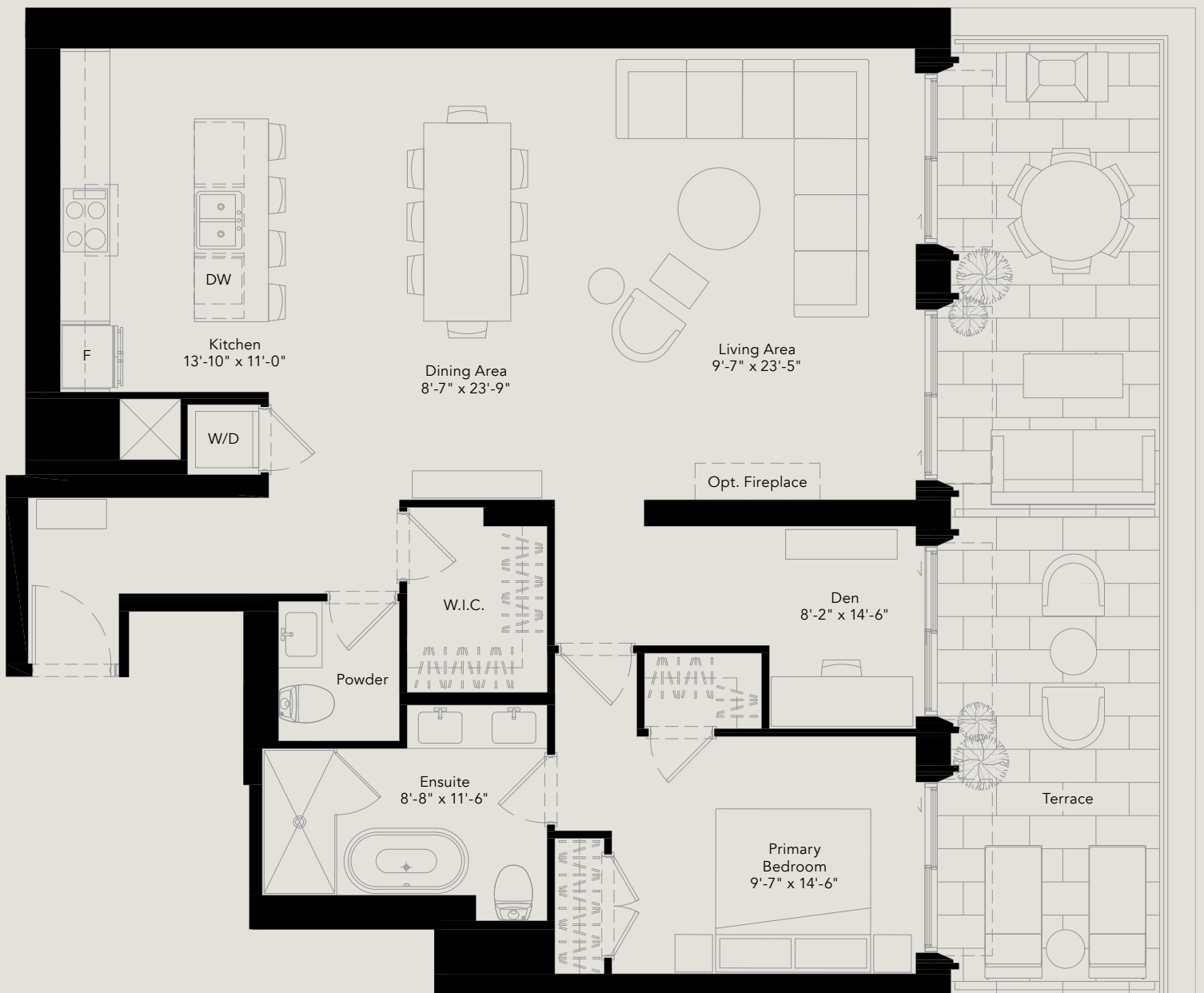
AVENUE ROAD · YORKVILLE

## 405B The Berryman Collection

1 Bedroom + Den

Total: 1,651 Sq. Ft.

Interior: 1,303 Sq. Ft.  
Exterior: 348 Sq. Ft.



Any stated areas and/or shown are approximate only and subject to normal construction variances. Actual useable floor space may vary from any stated or depicted floor area and the unit shall be measured in accordance with the provisions set out in the HCRA Directive-Floor Area Calculations. The layout of the suite may be reversed depending on the location of the unit within the project. The size and configuration of balconies and/or terraces remains subject to change and the ultimate layout, size, and configuration will be determined in the course of construction by the Vendor, in its sole and absolute discretion. The size, location and/or configuration of the windows, columns and spandrel glass shown may be changed, varied or mirrored. Ceiling heights are subject to exposed ducts, dropped ceilings, structural beams and bulkheads required for mechanical purposes such as kitchen and washroom exhausts and heating and cooling ducts have not been shown or indicated. Any and all materials, measurements, dimensions and/or specifications are subject to change without notice. Unit 404/405. E.&O.E. July, 2025

sierra