

ONE TEN

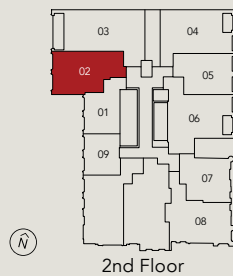
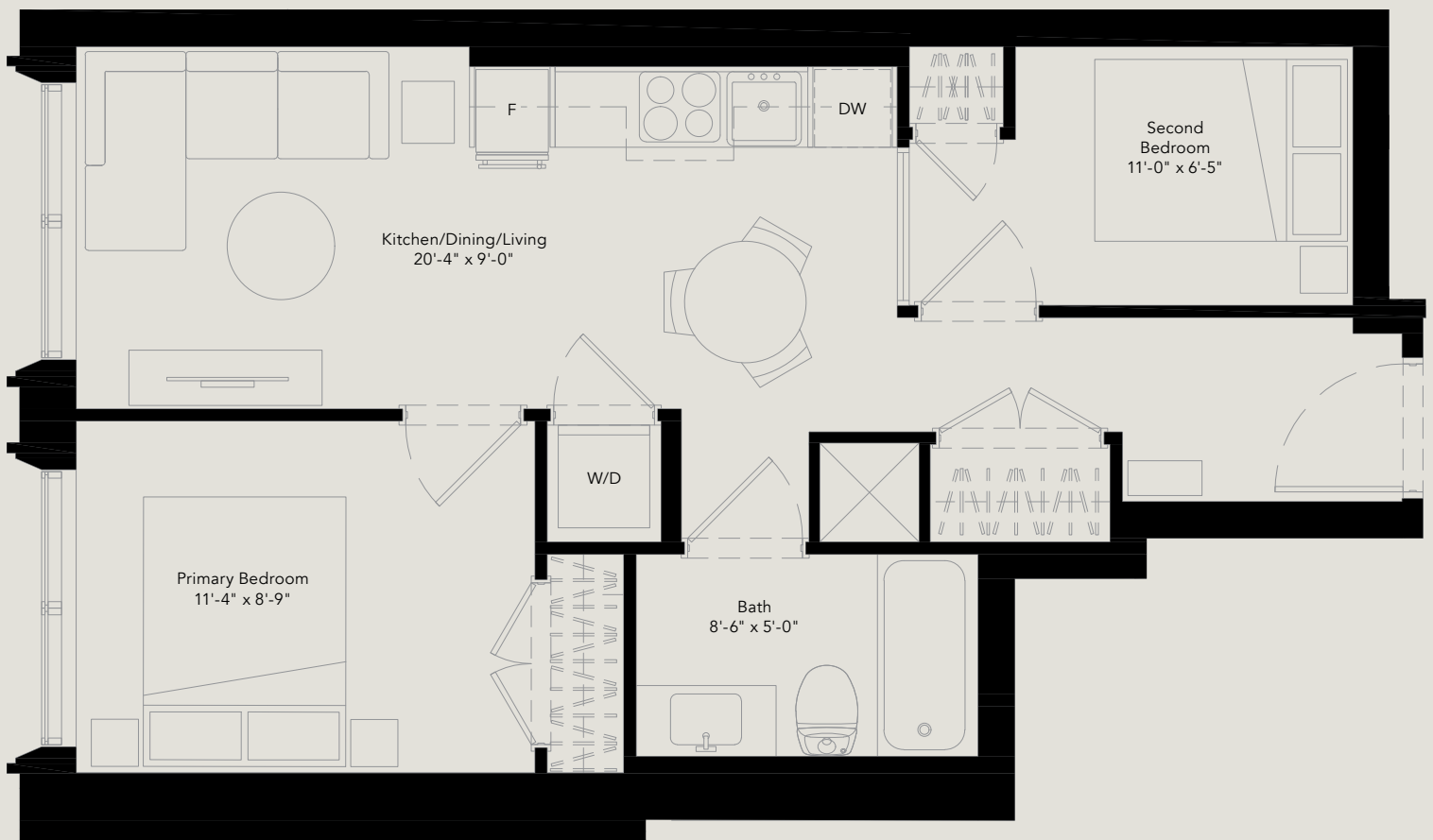
AVENUE ROAD · YORKVILLE

202 The Cumberland Collection

2 Bedroom

Total: 601 Sq. Ft.

Interior: 601 Sq. Ft.



Any stated areas and/or shown are approximate only and subject to normal construction variances. Actual useable floor space may vary from any stated or depicted floor area and the unit shall be measured in accordance with the provisions set out in the HCRA Directive-Floor Area Calculations. The layout of the suite may be reversed depending on the location of the unit within the project. The size and configuration of balconies and/or terraces remains subject to change and the ultimate layout, size, and configuration will be determined in the course of construction by the Vendor, in its sole and absolute discretion. The size, location and/or configuration of the windows, columns and spandrel glass shown may be changed, varied or mirrored. Ceiling heights are subject to exposed ducts, dropped ceilings, structural beams and bulkheads required for mechanical purposes such as kitchen and washroom exhausts and heating and cooling ducts have not been shown or indicated. Any and all materials, measurements, dimensions and/or specifications are subject to change without notice. E.&O.E. April, 2025

sierra

ONE TEN

AVENUE ROAD · YORKVILLE

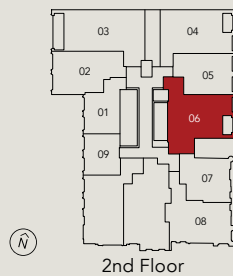
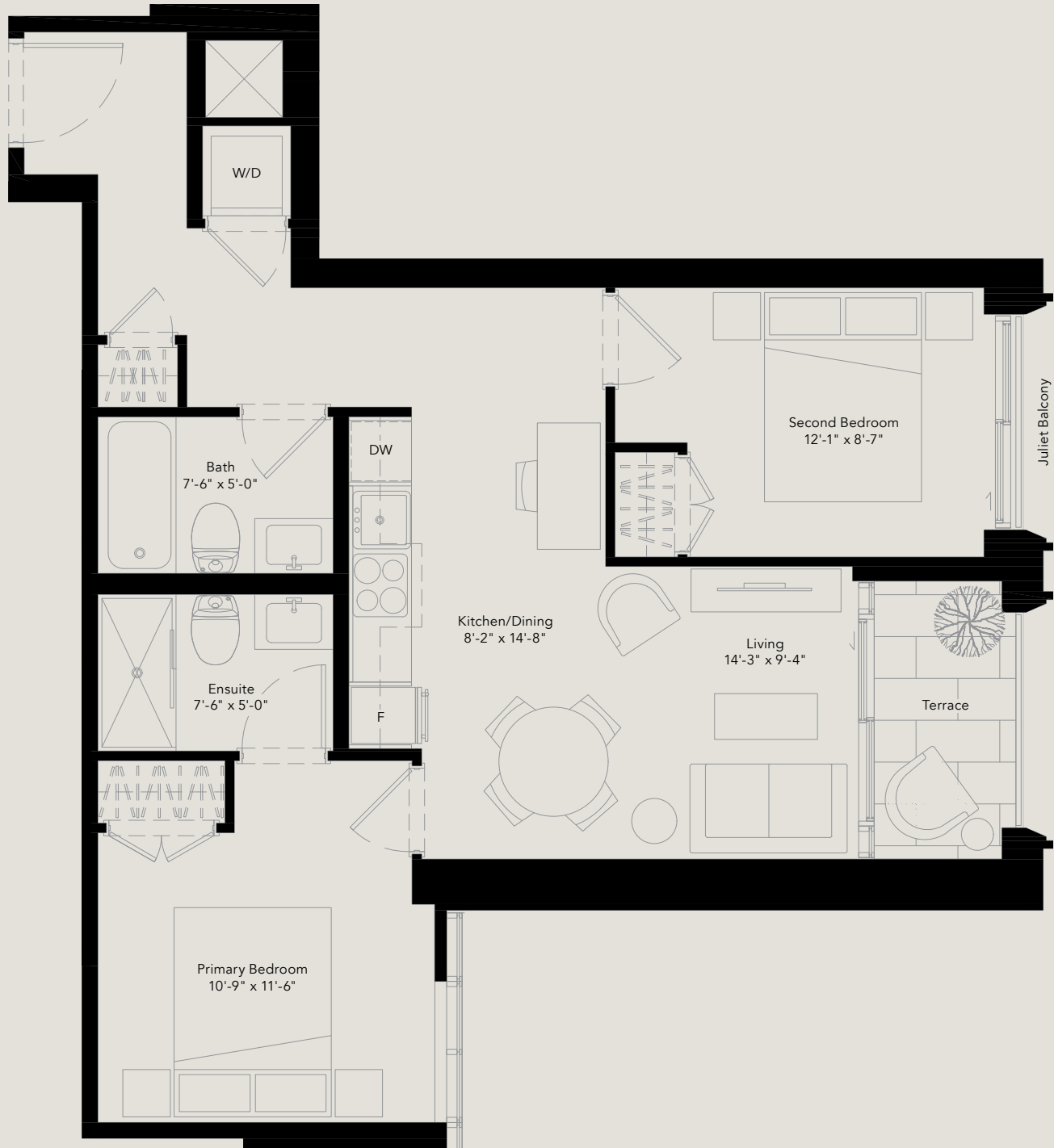
206

The Cumberland Collection

2 Bedroom

Total: 765 Sq. Ft.

Interior: 724 Sq. Ft.
Exterior: 41 Sq. Ft.



Any stated areas and/or shown are approximate only and subject to normal construction variances. Actual useable floor space may vary from any stated or depicted floor area and the unit shall be measured in accordance with the provisions set out in the HCRA Directive-Floor Area Calculations. The layout of the suite may be reversed depending on the location of the unit within the project. The size and configuration of balconies and/or terraces remains subject to change and the ultimate layout, size, and configuration will be determined in the course of construction by the Vendor, in its sole and absolute discretion. The size, location and/or configuration of the windows, columns and spandrel glass shown may be changed, varied or mirrored. Ceiling heights are subject to exposed ducts, dropped ceilings, structural beams and bulkheads required for mechanical purposes such as kitchen and washroom exhausts and heating and cooling ducts have not been shown or indicated. Any and all materials, measurements, dimensions and/or specifications are subject to change without notice. E.&O.E. April, 2025



ONE TEN

AVENUE ROAD · YORKVILLE

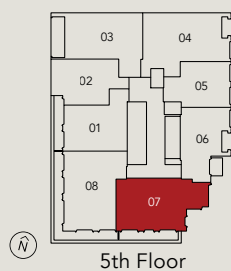
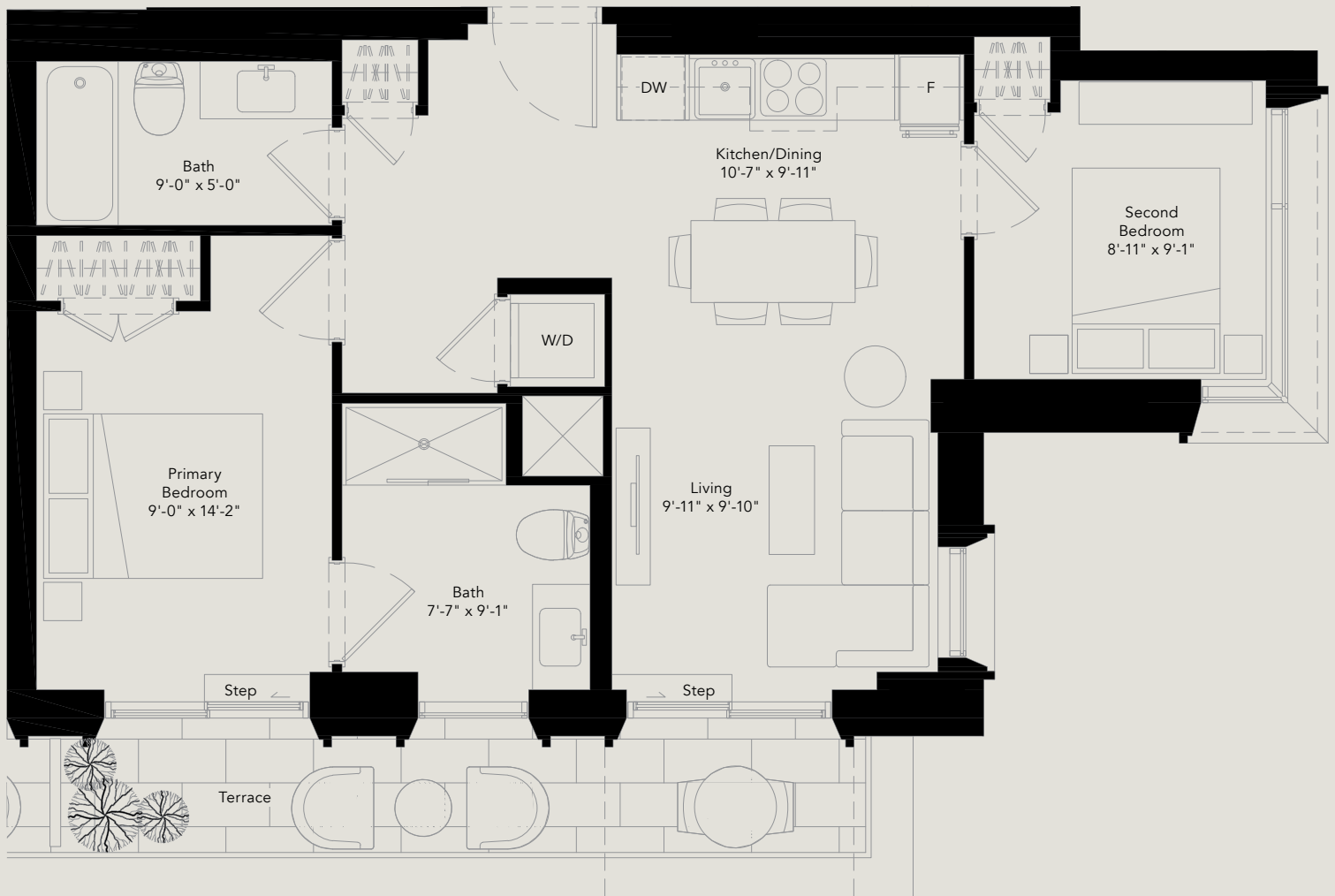
507

The Cumberland Collection

2 Bedroom

Total: 841 Sq. Ft.

Interior: 741 Sq. Ft.
Exterior: 100 Sq. Ft.



Any stated areas and/or shown are approximate only and subject to normal construction variances. Actual useable floor space may vary from any stated or depicted floor area and the unit shall be measured in accordance with the provisions set out in the HCRA Directive-Floor Area Calculations. The layout of the suite may be reversed depending on the location of the unit within the project. The size and configuration of balconies and/or terraces remains subject to change and the ultimate layout, size, and configuration will be determined in the course of construction by the Vendor, in its sole and absolute discretion. The size, location and/or configuration of the windows, columns and spandrel glass shown may be changed, varied or mirrored. Ceiling heights are subject to exposed ducts, dropped ceilings, structural beams and bulkheads required for mechanical purposes such as kitchen and washroom exhausts and heating and cooling ducts have not been shown or indicated. Any and all materials, measurements, dimensions and/or specifications are subject to change without notice. E.&O.E. April, 2025



ONE TEN

AVENUE ROAD · YORKVILLE

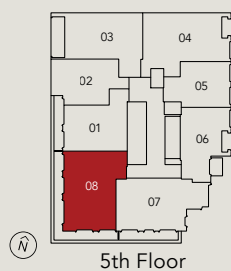
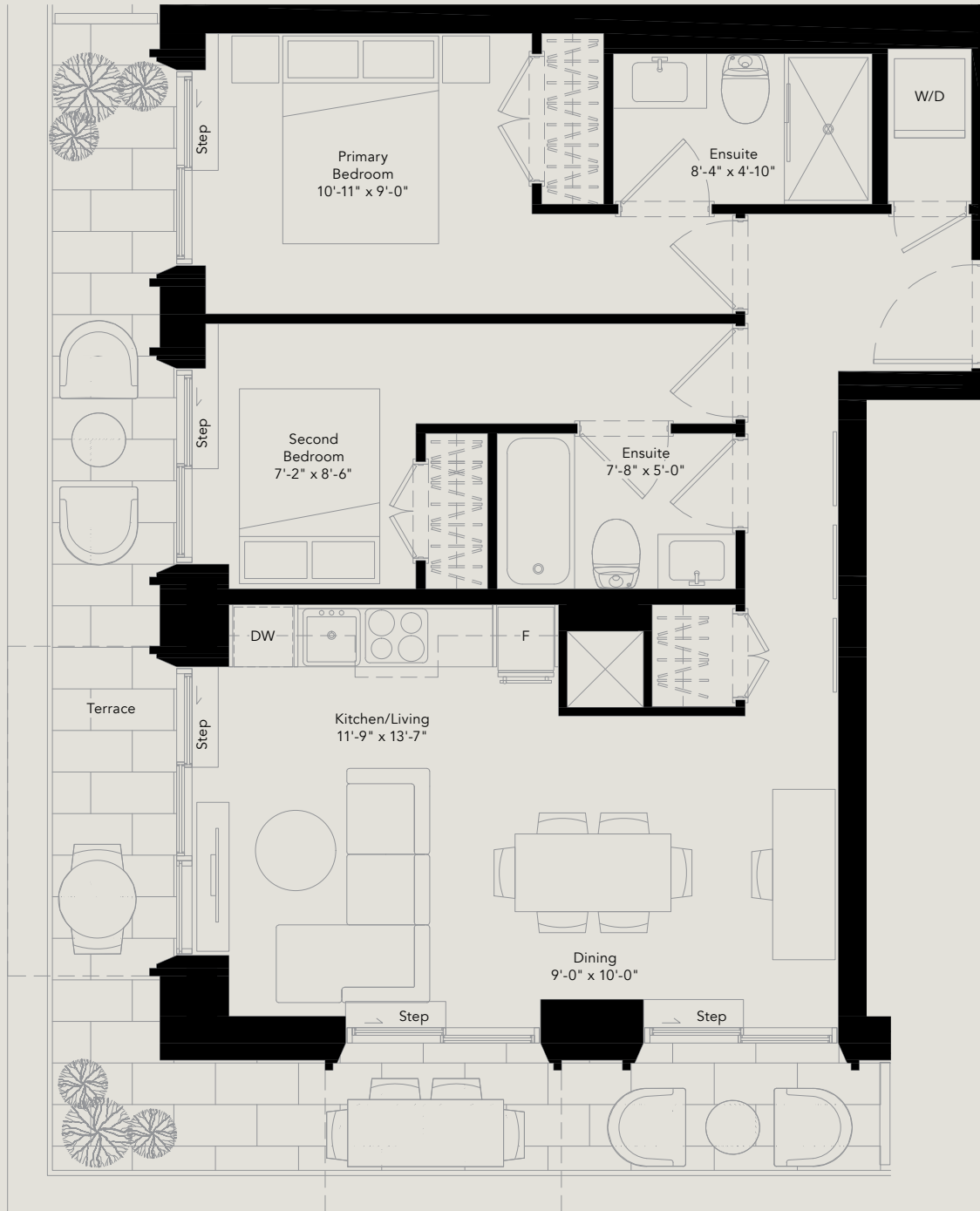
508

The Cumberland Collection

2 Bedroom

Total: 1,015 Sq. Ft.

Interior: 777 Sq. Ft.
Exterior: 238 Sq. Ft.



Any stated areas and/or shown are approximate only and subject to normal construction variances. Actual useable floor space may vary from any stated or depicted floor area and the unit shall be measured in accordance with the provisions set out in the HCRA Directive-Floor Area Calculations. The layout of the suite may be reversed depending on the location of the unit within the project. The size and configuration of balconies and/or terraces remains subject to change and the ultimate layout, size, and configuration will be determined in the course of construction by the Vendor, in its sole and absolute discretion. The size, location and/or configuration of the windows, columns and spandrel glass shown may be changed, varied or mirrored. Ceiling heights are subject to exposed ducts, dropped ceilings, structural beams and bulkheads required for mechanical purposes such as kitchen and washroom exhausts and heating and cooling ducts have not been shown or indicated. Any and all materials, measurements, dimensions and/or specifications are subject to change without notice. E.&O.E. April, 2025

sierra

ONE TEN

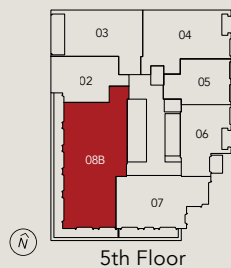
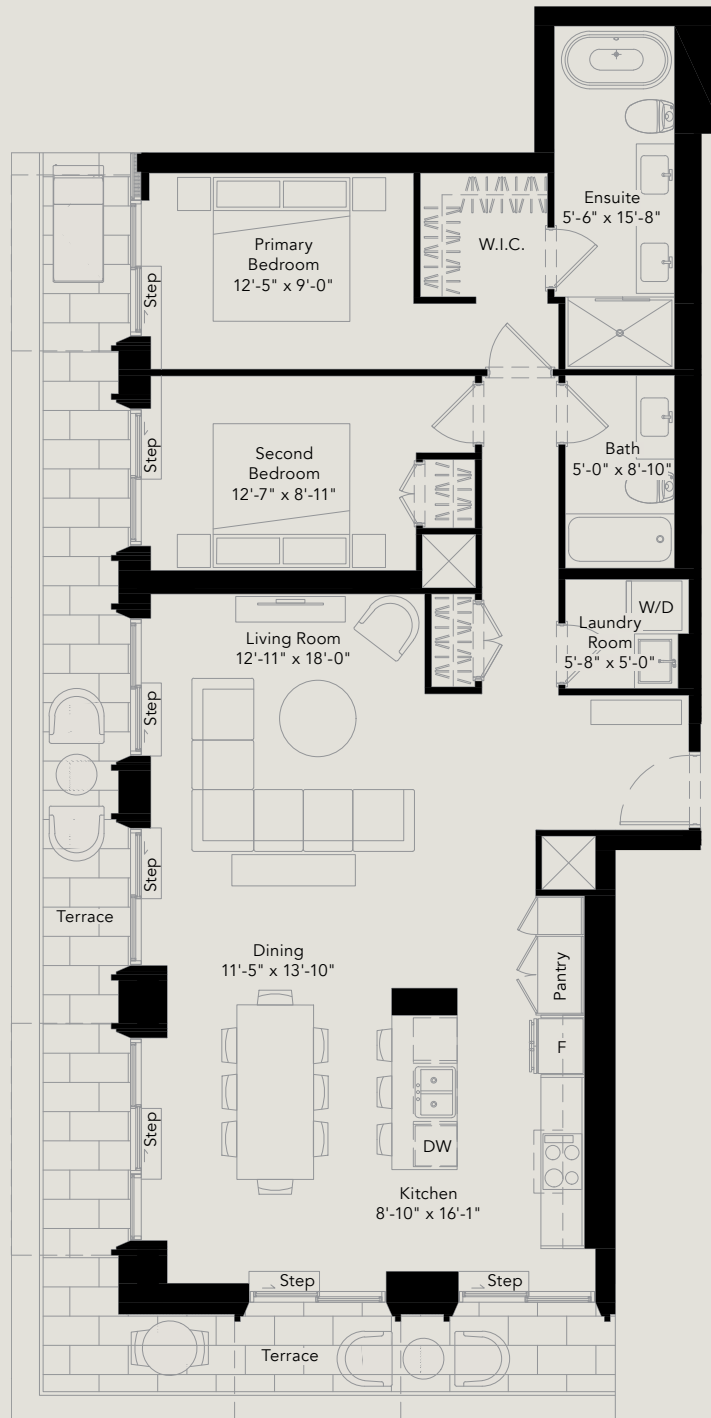
AVENUE ROAD · YORKVILLE

508B The Cumberland Collection

2 Bedroom

Total: 1,669 Sq. Ft.

Interior: 1,338 Sq. Ft.
Exterior: 331 Sq. Ft.



Any stated areas and/or shown are approximate only and subject to normal construction variances. Actual useable floor space may vary from any stated or depicted floor area and the unit shall be measured in accordance with the provisions set out in the HCRA Directive-Floor Area Calculations. The layout of the suite may be reversed depending on the location of the unit within the project. The size and configuration of balconies and/or terraces remains subject to change and the ultimate layout, size, and configuration will be determined in the course of construction by the Vendor, in its sole and absolute discretion. The size, location and/or configuration of the windows, columns and spandrel glass shown may be changed, varied or mirrored. Ceiling heights are subject to exposed ducts, dropped ceilings, structural beams and bulkheads required for mechanical purposes such as kitchen and washroom exhausts and heating and cooling ducts have not been shown or indicated. Any and all materials, measurements, dimensions and/or specifications are subject to change without notice. Unit 501/508 E.&O.E. April, 2025



ONE TEN

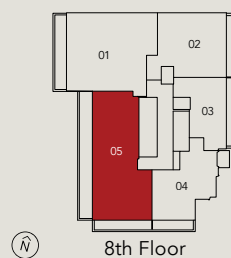
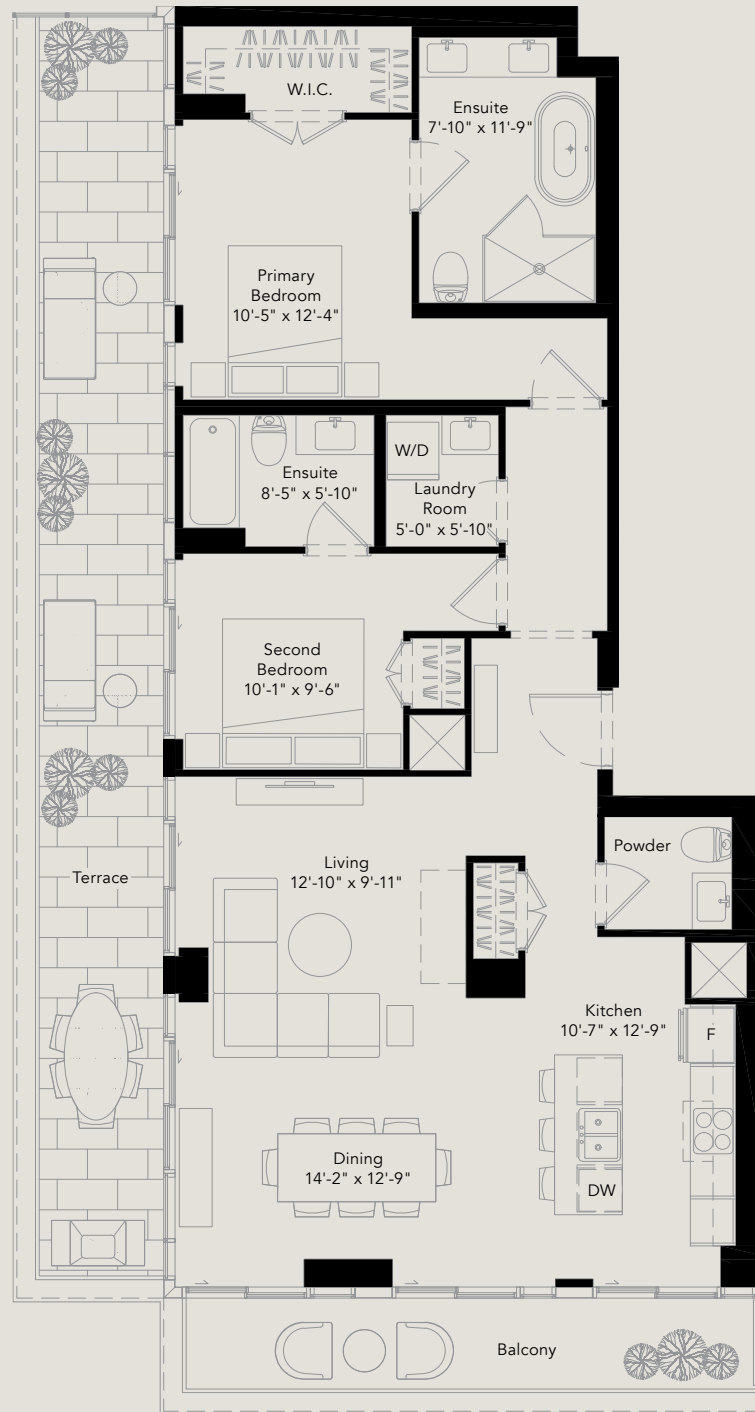
AVENUE ROAD · YORKVILLE

805 The Cumberland Collection

2 Bedroom

Total: 1,694 Sq. Ft.

Interior: 1,273 Sq. Ft.
Exterior: 421 Sq. Ft.



Any stated areas and/or shown are approximate only and subject to normal construction variances. Actual useable floor space may vary from any stated or depicted floor area and the unit shall be measured in accordance with the provisions set out in the HCRA Directive-Floor Area Calculations. The layout of the suite may be reversed depending on the location of the unit within the project. The size and configuration of balconies and/or terraces remains subject to change and the ultimate layout, size, and configuration will be determined in the course of construction by the Vendor, in its sole and absolute discretion. The size, location and/or configuration of the windows, columns and spandrel glass shown may be changed, varied or mirrored. Ceiling heights are subject to exposed ducts, dropped ceilings, structural beams and bulkheads required for mechanical purposes such as kitchen and washroom exhausts and heating and cooling ducts have not been shown or indicated. Any and all materials, measurements, dimensions and/or specifications are subject to change without notice. E.&O.E. April, 2025

sierra

ONE TEN

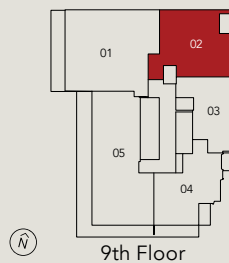
AVENUE ROAD · YORKVILLE

902 The Cumberland Collection

2 Bedroom

Total: 896 Sq. Ft.

Interior: 842 Sq. Ft.
Exterior: 54 Sq. Ft.



Any stated areas and/or shown are approximate only and subject to normal construction variances. Actual useable floor space may vary from any stated or depicted floor area and the unit shall be measured in accordance with the provisions set out in the HCRA Directive-Floor Area Calculations. The layout of the suite may be reversed depending on the location of the unit within the project. The size and configuration of balconies and/or terraces remains subject to change and the ultimate layout, size, and configuration will be determined in the course of construction by the Vendor, in its sole and absolute discretion. The size, location and/or configuration of the windows, columns and spandrel glass shown may be changed, varied or mirrored. Ceiling heights are subject to exposed ducts, dropped ceilings, structural beams and bulkheads required for mechanical purposes such as kitchen and washroom exhausts and heating and cooling ducts have not been shown or indicated. Any and all materials, measurements, dimensions and/or specifications are subject to change without notice. E.&O.E. April, 2025

