

ONE TEN

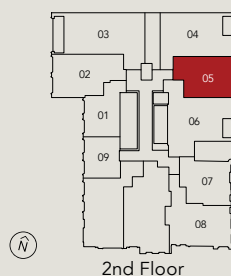
AVENUE ROAD · YORKVILLE

205 The Berryman Collection

1 Bedroom + Den

Total: 486 Sq. Ft.

Interior: 486 Sq. Ft.



Any stated areas and/or shown are approximate only and subject to normal construction variances. Actual useable floor space may vary from any stated or depicted floor area and the unit shall be measured in accordance with the provisions set out in the HCRA Directive-Floor Area Calculations. The layout of the suite may be reversed depending on the location of the unit within the project. The size and configuration of balconies and/or terraces remains subject to change and the ultimate layout, size, and configuration will be determined in the course of construction by the Vendor, in its sole and absolute discretion. The size, location and/or configuration of the windows, columns and spandrel glass shown may be changed, varied or mirrored. Ceiling heights are subject to exposed ducts, dropped ceilings, structural beams and bulkheads required for mechanical purposes such as kitchen and washroom exhausts and heating and cooling ducts have not been shown or indicated. Any and all materials, measurements, dimensions and/or specifications are subject to change without notice. E.&O.E. April, 2025



ONE TEN

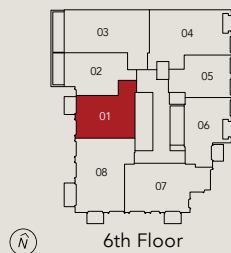
AVENUE ROAD · YORKVILLE

601 The Berryman Collection

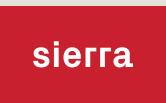
1 Bedroom + Den

Total: 599 Sq. Ft.

Interior: 561 Sq. Ft.
Exterior: 38 Sq. Ft.



Any stated areas and/or shown are approximate only and subject to normal construction variances. Actual useable floor space may vary from any stated or depicted floor area and the unit shall be measured in accordance with the provisions set out in the HCRA Directive-Floor Area Calculations. The layout of the suite may be reversed depending on the location of the unit within the project. The size and configuration of balconies and/or terraces remains subject to change and the ultimate layout, size, and configuration will be determined in the course of construction by the Vendor, in its sole and absolute discretion. The size, location and/or configuration of the windows, columns and spandrel glass shown may be changed, varied or mirrored. Ceiling heights are subject to exposed ducts, dropped ceilings, structural beams and bulkheads required for mechanical purposes such as kitchen and washroom exhausts and heating and cooling ducts have not been shown or indicated. Any and all materials, measurements, dimensions and/or specifications are subject to change without notice. E.&O.E. April, 2025



ONE TEN

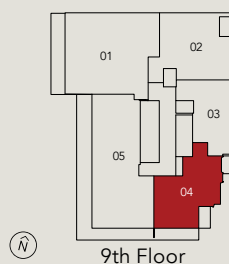
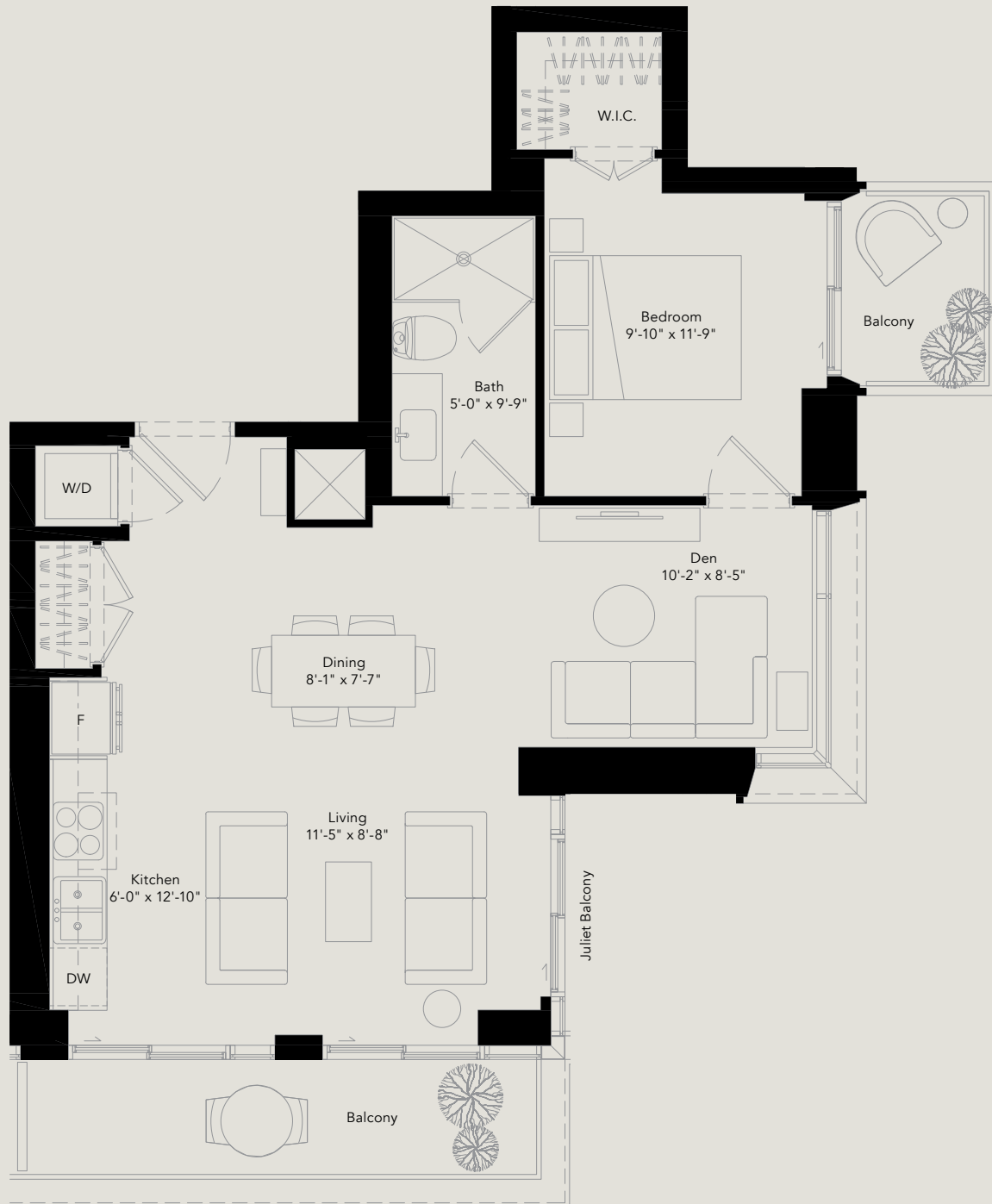
AVENUE ROAD · YORKVILLE

904 The Berryman Collection

1 Bedroom + Den

Total: 859 Sq. Ft.

Interior: 715 Sq. Ft.
Exterior: 144 Sq. Ft.



Any stated areas and/or shown are approximate only and subject to normal construction variances. Actual useable floor space may vary from any stated or depicted floor area and the unit shall be measured in accordance with the provisions set out in the HCRA Directive-Floor Area Calculations. The layout of the suite may be reversed depending on the location of the unit within the project. The size and configuration of balconies and/or terraces remains subject to change and the ultimate layout, size, and configuration will be determined in the course of construction by the Vendor, in its sole and absolute discretion. The size, location and/or configuration of the windows, columns and spandrel glass shown may be changed, varied or mirrored. Ceiling heights are subject to exposed ducts, dropped ceilings, structural beams and bulkheads required for mechanical purposes such as kitchen and washroom exhausts and heating and cooling ducts have not been shown or indicated. Any and all materials, measurements, dimensions and/or specifications are subject to change without notice. E.&O.E. April, 2025

sierra

ONE TEN

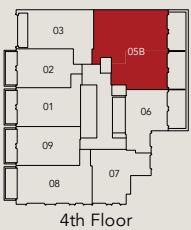
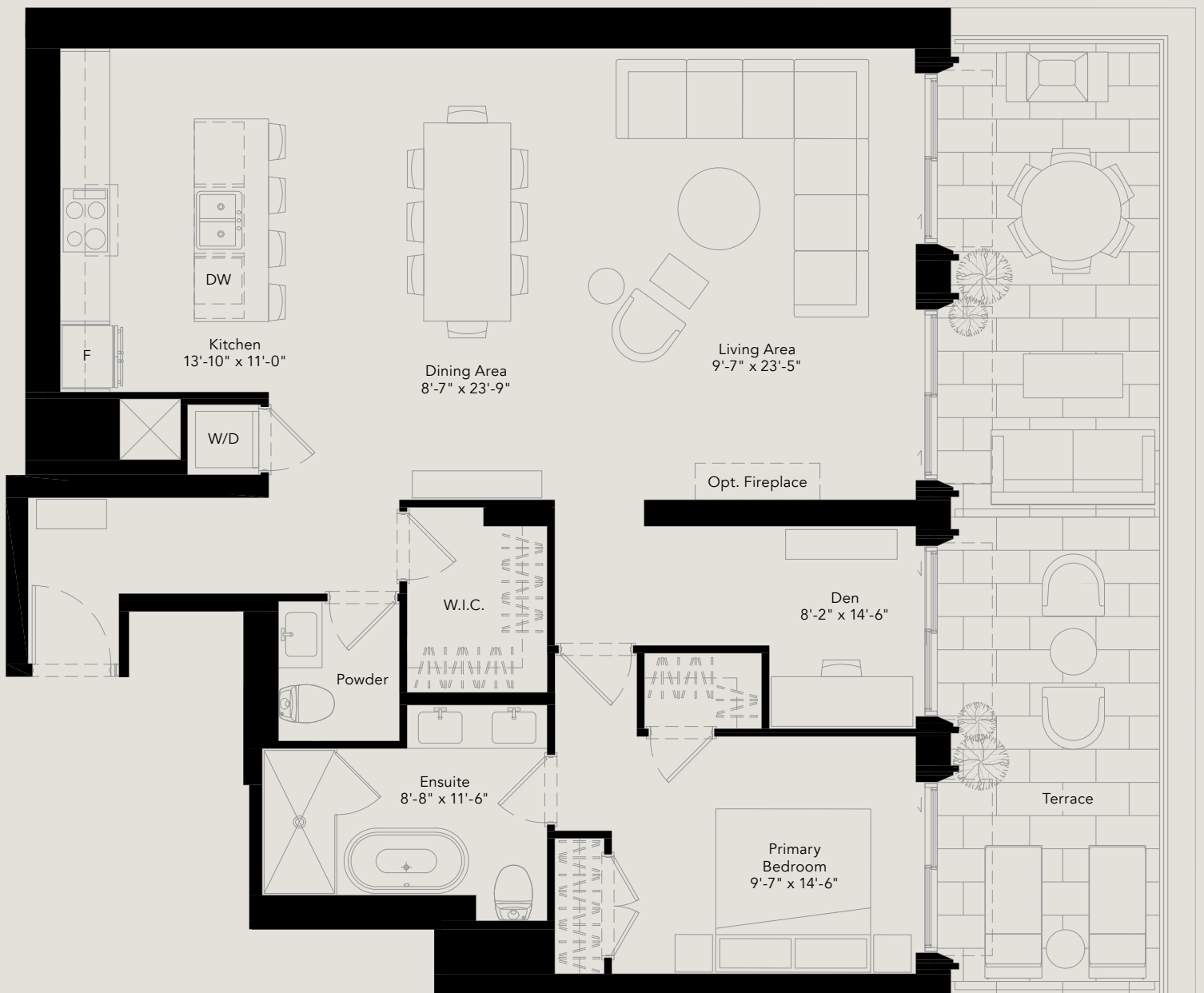
AVENUE ROAD · YORKVILLE

405B The Berryman Collection

1 Bedroom + Den

Total: 1,651 Sq. Ft.

Interior: 1,303 Sq. Ft.
Exterior: 348 Sq. Ft.



Any stated areas and/or shown are approximate only and subject to normal construction variances. Actual useable floor space may vary from any stated or depicted floor area and the unit shall be measured in accordance with the provisions set out in the HCRA Directive-Floor Area Calculations. The layout of the suite may be reversed depending on the location of the unit within the project. The size and configuration of balconies and/or terraces remains subject to change and the ultimate layout, size, and configuration will be determined in the course of construction by the Vendor, in its sole and absolute discretion. The size, location and/or configuration of the windows, columns and spandrel glass shown may be changed, varied or mirrored. Ceiling heights are subject to exposed ducts, dropped ceilings, structural beams and bulkheads required for mechanical purposes such as kitchen and washroom exhausts and heating and cooling ducts have not been shown or indicated. Any and all materials, measurements, dimensions and/or specifications are subject to change without notice. Unit 404/405. E.&O.E. July, 2025

sierra

ONE TEN

AVENUE ROAD · YORKVILLE

603B The Berryman Collection

1 Bedroom + Den

Total: 1,486 Sq. Ft.

Interior: 1,320 Sq. Ft.
Exterior: 166 Sq. Ft.



Any stated areas and/or shown are approximate only and subject to normal construction variances. Actual useable floor space may vary from any stated or depicted floor area and the unit shall be measured in accordance with the provisions set out in the HCRA Directive-Floor Area Calculations. The layout of the suite may be reversed depending on the location of the unit within the project. The size and configuration of balconies and/or terraces remains subject to change and the ultimate layout, size, and configuration will be determined in the course of construction by the Vendor, in its sole and absolute discretion. The size, location and/or configuration of the windows, columns and spandrel glass shown may be changed, varied or mirrored. Ceiling heights are subject to exposed ducts, dropped ceilings, structural beams and bulkheads required for mechanical purposes such as kitchen and washroom exhausts and heating and cooling ducts have not been shown or indicated. Any and all materials, measurements, dimensions and/or specifications are subject to change without notice. Unit 602/603. E.&O.E. July, 2025



ONE TEN

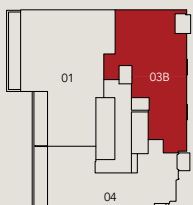
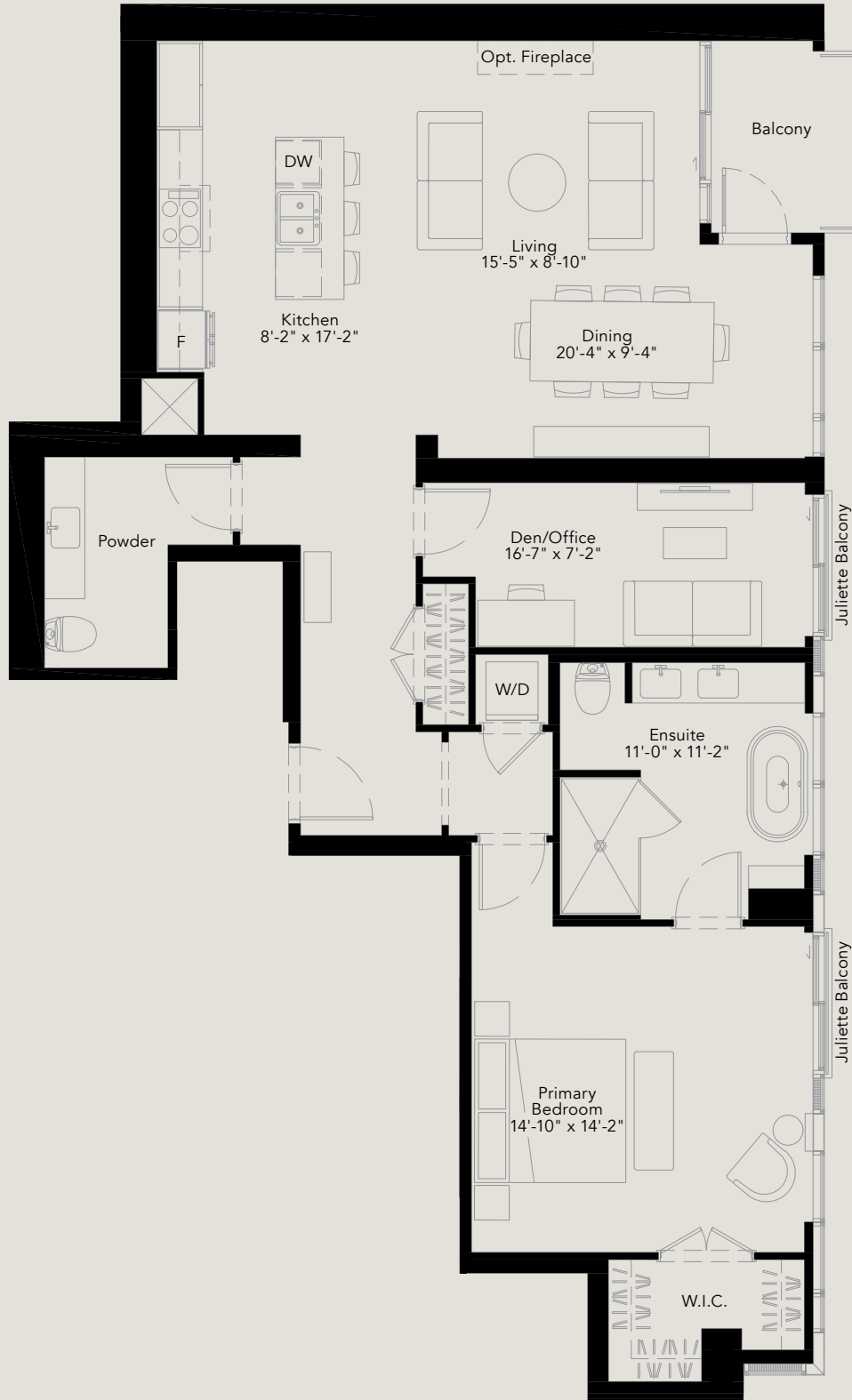
AVENUE ROAD · YORKVILLE

1003B The Berryman Collection

1 Bedroom + Den

Total: 1,436 Sq. Ft.

Interior: 1,382 Sq. Ft.
Exterior: 54 Sq. Ft.



10th Floor



Any stated areas and/or shown are approximate only and subject to normal construction variances. Actual useable floor space may vary from any stated or depicted floor area and the unit shall be measured in accordance with the provisions set out in the HCRA Directive-Floor Area Calculations. The layout of the suite may be reversed depending on the location of the unit within the project. The size and configuration of balconies and/or terraces remains subject to change and the ultimate layout, size, and configuration will be determined in the course of construction by the Vendor, in its sole and absolute discretion. The size, location and/or configuration of the windows, columns and spandrel glass shown may be changed, varied or mirrored. Ceiling heights are subject to exposed ducts, dropped ceilings, structural beams and bulkheads required for mechanical purposes such as kitchen and washroom exhausts and heating and cooling ducts have not been shown or indicated. Any and all materials, measurements, dimensions and/or specifications are subject to change without notice. Unit 1003/1103. E.&O.E. July, 2025

